



2025 Enrollment Guide

Peoples Health Secure Complete (HMO-POS D-SNP)

H1961-019-000

Service area: Louisiana - Acadia, Allen, Ascension, Assumption, Avoyelles, Beauregard, Bienville, Bossier, Caddo, Calcasieu, Caldwell, Cameron, Catahoula, Claiborne, Concordia, De Soto, East Baton Rouge, East Carroll, East Feliciana, Evangeline, Franklin, Grant, Iberia, Iberville, Jackson, Jefferson, Jefferson Davis, Lafayette, Lafourche, LaSalle, Lincoln, Livingston, Madison, Morehouse, Natchitoches, Orleans, Ouachita, Plaquemines, Pointe Coupee, Rapides, Red River, Richland, Sabine, St. Bernard, St. Charles, St. Helena, St. James, St. John the Baptist, St. Landry, St. Martin, St. Mary, St. Tammany, Tangipahoa, Tensas, Terrebonne, Union, Vermilion, Vernon, Washington, Webster, West Baton Rouge, West Carroll, West Feliciana, Winn parishes

PEOPLES HEALTH

A UnitedHealthcare Company

POS for dental only with form
FBDE,QMB,QMB+,SLMB+

Peoples Health offers you Medicare coverage you can count on for your whole life ahead



Simplify your day with benefits built to be used

With plans designed for all styles, stages and ages of Medicare, there's a plan to fit your life. Use your UnitedHealthcare UCard® as your member ID and so much more. Your UCard gives you access to a large network of Medicare Advantage providers.



Get more for your Medicare dollar

Get reliable care with low out-of-pocket costs. That includes plans with \$0 copays for virtual visits, \$0 copays for preventive dental, \$0 copays for covered prescriptions, and \$0 copays for hearing and vision exams. You've got big and small plans ahead of you, so feel confident managing your whole health with Peoples Health.



Expert guidance for today and as your needs change

Count on us to be there when it matters. We'll help you find the right plan with easy-to-understand plan education, useful online tools and helpful Medicare Plan Experts.¹ Our advocates and navigators help you get the answers and care you need.

¹Medicare Plan Expert is a licensed insurance sales agent/producer.

UCard opens doors where it matters

Once you're a member, you'll receive your new UnitedHealthcare UCard in the mail. Reach for your UCard when:



Visiting a provider or filling a prescription

Your UCard has the plan information you and your providers need.



Buying healthy food, OTC products or paying utility bills

Use the credit loaded on your UCard as payment in-store or online.



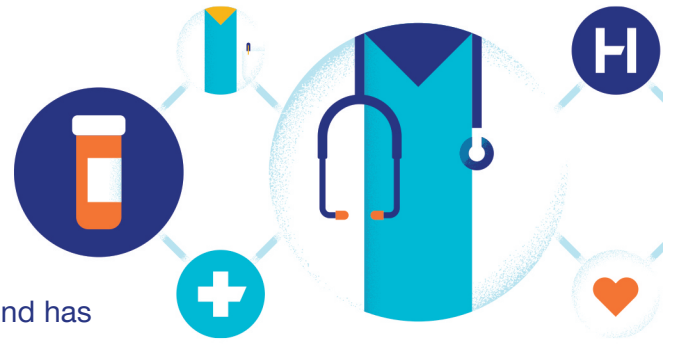
Checking in at the gym

Show your UCard to access your free membership the first time you visit a network gym or fitness location.



Take advantage of a specially designed plan

This plan is for people with Medicare and Medicaid coverage and has many extra benefits that can help you live a healthier life. It has a network of quality doctors, hospitals, pharmacies and other providers, designed to help you get the care you need. And you have access to a large dental provider network. You can also get care from out-of-network dental providers but your costs may be higher, even for services with a \$0 copay.



Here's how this HMO-POS D-SNP plan works



Get care from providers in the network or visit out-of-network providers for covered dental services.



Select a primary care provider to oversee and help manage your care. It's required by the plan, but it's also very beneficial for your long term health and well-being.



\$0 covered services when received in-network. Look at the Summary of Benefits in this book to find out what services are covered.



No referral is needed to see a network specialist or other provider.



Emergency and urgently needed services are covered anywhere in the world.



This plan includes prescription drug coverage. Always use network pharmacies. You may pay more or the full cost for drugs received from pharmacies not in the network.

Go to [peopleshealth.com](https://www.peopleshealth.com) to search for a network provider or pharmacy using the online directories. You can also view the plan Drug List (Formulary) to see what drugs are covered and if there are any restrictions. See your Evidence of Coverage for a list of all covered services.

Scan this code to view the drug list



Benefit Highlights

Peoples Health Secure Complete (HMO-POS D-SNP)

This is a short description of your 2025 plan benefits. The values shown in-network are for those with Medicare Parts A and B cost sharing that may be covered by the state. Cost share may vary depending on your individual Medicaid eligibility. For complete information, please refer to your Summary of Benefits or Evidence of Coverage. Limitations, exclusions, and restrictions may apply.

Plan costs

If you have full Medicaid benefits or are a Qualified Medicare Beneficiary, you will pay \$0 for your Medicare-covered services. If your eligibility for Medicaid or “Extra Help” changes, your cost sharing and premium may change.

Monthly plan premium	\$0
-----------------------------	-----

Medical benefits

Doctor’s office visit

Primary care provider (PCP)	\$0 copay
-----------------------------	-----------

Specialist	\$0 copay (no referral needed)
------------	--------------------------------

Virtual visits	\$0 copay to talk with a network telehealth provider online through live audio and video
----------------	--

Preventive services	\$0 copay
----------------------------	-----------

Inpatient hospital care	\$0 copay per stay for unlimited days
--------------------------------	---------------------------------------

Skilled nursing facility (SNF)	\$0 copay per day: days 1-100
---------------------------------------	-------------------------------

Outpatient hospital, including surgery	\$0 copay
---	-----------

Outpatient mental health

Group therapy	\$0 copay
---------------	-----------

Individual therapy	\$0 copay
--------------------	-----------

Virtual visits	\$0 copay to talk with a network telehealth provider online through live audio and video
----------------	--

Diabetes monitoring supplies	\$0 copay for covered brands
-------------------------------------	------------------------------

Diagnostic radiology services (such as MRIs, CT scans)	\$0 copay
---	-----------

Medical benefits

Diagnostic tests and procedures (non-radiological)	\$0 copay
Lab services	\$0 copay
Outpatient x-rays	\$0 copay
Ambulance	\$0 copay for ground or air
Emergency care	\$0 copay (worldwide)
Urgently needed services	\$0 copay (worldwide)

Benefits and services beyond Original Medicare

Routine physical	\$0 copay, 1 per year
Routine eye exams	\$0 copay, 1 per year
Routine eyewear	<p>\$0 copay Plan pays up to \$400 every year toward your purchase of 1 pair of frames (with standard lenses covered in full) or contact lenses (fitting and evaluation may be an additional cost) through network providers.</p> <p>Home delivered eyewear available through select network providers (select products only).</p> <p>You are responsible for all eyewear costs from providers outside of the network.</p>
Dental – preventive (covered in-network and out-of-network)	\$0 copay for exams, cleanings, X-rays and fluoride*
Dental – comprehensive (covered in-network and out-of-network)	\$0 copay for comprehensive dental services*
Dental - benefit limit	\$3,000 combined limit on all covered dental services*
Hearing - routine exam	\$0 copay, 1 per year

Benefits and services beyond Original Medicare

Hearing aids	Plan pays up to \$1,500 every year for 2 hearing aids from network providers. Includes hearing aids delivered directly to you (select products only).
Fitness program	\$0 copay, which includes a free gym membership, online fitness classes, and memory activities.
Routine transportation	\$0 copay for 60 one-way trips with the network transportation provider to or from approved locations. Restrictions apply.
Foot care - routine	\$0 copay, 6 visits per year
Food, over-the-counter (OTC) and utility bill credit	\$227 credit every month to buy covered OTC products. Qualifying members can also use this credit to buy covered healthy food or pay certain utility bills.
Meal benefit	\$0 copay for home-delivered meals from the network meal provider after an eligible hospital stay. Restrictions apply.
Respite care	\$0 copay for each session with a network respite care provider, up to 12 sessions every year. This benefit is for members diagnosed with dementia. Restrictions apply.

*Benefits are combined in and out-of-network

Good news for 2025

The Coverage Gap, or "donut hole", has been eliminated and your out-of-pocket maximum cost is lower than ever. That means you're more protected from high drug costs in 2025.

Prescription drugs	
Deductible	\$0
Initial Coverage	30-day or 100-day supply from retail or mail order network pharmacy
All covered drugs¹	\$0 copay (Some covered drugs are limited to a 30-day supply)

¹ You will pay a maximum of \$0 for each 1-month supply of Part D covered insulin drugs.



A UnitedHealthcare Company

Eligibility for healthy food, utilities and \$0 copay for Rx benefits under the Value-Based Insurance Design model is limited to members with Extra Help from Medicare, and will be verified after enrollment.

Premiums, copays, coinsurance, and deductibles may vary based on the level of Extra Help you receive. Please contact the plan for further details. This information is not a complete description of benefits. Contact the plan for more information.

Y0066_MABH_2025_M H1961019000

PHLA25HP0238153_000

Summary of Benefits 2025

Peoples Health Secure Complete (HMO-POS D-SNP)

H1961-019-000

Look inside to learn more about the plan and the health and drug services it covers.
Contact us for more information about the plan.

 [peopleshealth.com](https://www.peopleshealth.com)

 Toll-free **1-855-269-0778**, TTY **711**
8 a.m.-8 p.m. local time, 7 days a week

PEOPLES HEALTH

A UnitedHealthcare Company

Y0066_SB_H1961_019_000_2025_M

Summary of Benefits

January 1, 2025 - December 31, 2025

This is a summary of what we cover and what you pay. For a complete list of covered services, limitations and exclusions, review the Evidence of Coverage (EOC) at MyPeoplesHealthPlan.com or call Customer Service for help. After you enroll in the plan, you will get more information on how to view your plan details online.

Peoples Health Secure Complete (HMO-POS D-SNP)

Medical premium, deductible and limits

Monthly plan premium	\$0 You may need to continue to pay your Medicare Part B premium
Part B premium reduction	\$1.90 If your Medicare Part B premium is paid by Medicaid, or others on your behalf, you will not see the reduction.
Annual medical deductible	This plan does not have a medical deductible.
Maximum out-of-pocket amount (does not include prescription drugs)	\$0 This is the most you will pay out-of-pocket each year for Medicare-covered services and supplies received from network providers.
Medicare cost-sharing	If you have full Medicaid benefits or are a Qualified Medicare Beneficiary (QMB), you will pay \$0 for your Medicare-covered services as noted by the cost-sharing in this chart.

Medical benefits

Inpatient hospital care²	\$0 copay per stay Our plan covers an unlimited number of days for an inpatient hospital stay.
Outpatient hospital	Ambulatory surgical center (ASC) ² \$0 copay

Medical benefits

	Outpatient hospital, including surgery ²	\$0 copay	
	Outpatient hospital observation services ²	\$0 copay	
Doctor visits	Primary care provider	\$0 copay	
	Specialists ²	\$0 copay	
	Virtual medical visits	\$0 copay to talk with a network telehealth provider online through live audio and video	
Preventive services	Routine physical	\$0 copay, 1 per year	
	Medicare-covered	\$0 copay	<ul style="list-style-type: none"> <input type="checkbox"/> Abdominal aortic aneurysm screening <input type="checkbox"/> Alcohol misuse counseling <input type="checkbox"/> Annual wellness visit <input type="checkbox"/> Bone mass measurement <input type="checkbox"/> Breast cancer screening (mammogram) <input type="checkbox"/> Cardiovascular disease (behavioral therapy) <input type="checkbox"/> Cardiovascular screening <input type="checkbox"/> Cervical and vaginal cancer screening <input type="checkbox"/> Colorectal cancer screenings (colonoscopy, fecal occult blood test, flexible sigmoidoscopy) <input type="checkbox"/> Depression screening <input type="checkbox"/> Diabetes screenings and monitoring <input type="checkbox"/> Hepatitis C screening <input type="checkbox"/> HIV screening <input type="checkbox"/> Lung cancer with low dose computed tomography (LDCT) screening <input type="checkbox"/> Medical nutrition therapy services <input type="checkbox"/> Medicare Diabetes Prevention Program (MDPP) <input type="checkbox"/> Obesity screenings and counseling <input type="checkbox"/> Prostate cancer screenings (PSA) <input type="checkbox"/> Sexually transmitted infections screenings and counseling <input type="checkbox"/> Tobacco use cessation counseling (counseling for people with no sign of tobacco-related disease) <input type="checkbox"/> Vaccines, including those for the flu, Hepatitis B, pneumonia, or COVID-19 <input type="checkbox"/> “Welcome to Medicare” preventive visit (one-time)

Medical benefits

Any additional preventive services approved by Medicare during the contract year will be covered.
This plan covers preventive care screenings and annual physical exams at 100% when you use in-network providers.

Emergency care	\$0 copay (worldwide) per visit. If you are admitted to the hospital within 24 hours, you pay the inpatient hospital copay instead of the Emergency Care copay. See the “Inpatient Hospital Care” section of this booklet for other costs.
-----------------------	--

Urgently needed services	\$0 copay (worldwide) per visit
---------------------------------	---------------------------------

Diagnostic tests, lab and radiology services, and X-rays	Diagnostic radiology services (e.g. MRI, CT scan) ²	\$0 copay
---	--	-----------

Lab services ²	\$0 copay
---------------------------	-----------

Diagnostic tests and procedures ²	\$0 copay
--	-----------

Therapeutic radiology ²	\$0 copay
------------------------------------	-----------

Outpatient X-rays ²	\$0 copay
--------------------------------	-----------



Hearing services


Exam to diagnose and treat hearing and balance issues ²	\$0 copay
--	-----------


Routine hearing exam	\$0 copay, 1 per year
----------------------	-----------------------

Hearing aids ²	\$1,500 allowance every year for 2 hearing aids
---------------------------	---

- A broad selection of over-the-counter (OTC) and brand-name prescription hearing aids
- Access to one of the largest national networks of hearing professionals with more than 7,000 locations
- 3-year manufacturer warranty on all prescription hearing aids covers a trial period and damage or repair during warranty period

Medical benefits

 Routine dental benefits Covered in-network and out-of-network.	Preventive and comprehensive ²	\$3,000 allowance for all covered dental services* \$0 copay for covered preventive and comprehensive services like cleanings, fillings and crowns <ul style="list-style-type: none"> <input type="checkbox"/> No annual deductible <input type="checkbox"/> Access to one of the largest national dental networks <input type="checkbox"/> Freedom to see any dentist
--	---	--

 Vision services	Exam to diagnose and treat diseases and conditions of the eye ²	\$0 copay
	Eyewear after cataract surgery	\$0 copay
	Routine eye exam	\$0 copay, 1 per year
	Routine eyewear	\$400 allowance for 1 pair of frames or contacts <ul style="list-style-type: none"> • Free standard prescription lenses including single vision, bifocals, trifocals and Tier I (standard) progressives – all with scratch-resistant coating • Access to one of Medicare Advantage’s largest national networks of vision providers and retail providers • Eyewear available from many online providers, including Warby Parker and GlassesUSA

Mental health	Inpatient visit ² Our plan covers 90 days for an inpatient hospital stay	\$0 copay per stay
	Outpatient group therapy visit ²	\$0 copay
	Outpatient individual therapy visit ²	\$0 copay
	Virtual mental health visits	\$0 copay to talk with a network telehealth provider online through live audio and video

Skilled nursing facility (SNF)²	\$0 copay per day: days 1-100
---	-------------------------------

Medical benefits

Our plan covers up to 100 days in a SNF.

Outpatient rehabilitation services	Physical therapy and speech and language therapy visit ²	\$0 copay
	Occupational Therapy Visit ²	\$0 copay
	Virtual medical visits	\$0 copay to talk with a network telehealth provider online through live audio and video

Ambulance² Your provider must obtain prior authorization for non-emergency transportation.	\$0 copay for ground \$0 copay for air
---	---

Routine transportation	\$0 copay for 60 one-way trips with the network transportation provider to or from approved locations. Restrictions apply.
-------------------------------	--

Medicare Part B prescription drugs	Chemotherapy drugs ²	\$0 copay
	Part B covered insulin ²	\$0 copay
	Other Part B drugs ² Part B drugs may be subject to Step Therapy. See your Evidence of Coverage for details.	\$0 copay

Good news for 2025

The Coverage Gap, or "donut hole", has been eliminated and your out-of-pocket maximum cost is lower than ever. That means you're more protected from high drug costs in 2025.

Prescription drugs

Deductible	\$0
-------------------	-----

Prescription drugs

Initial Coverage

30-day[^] or 100-day supply from a retail or mail order network pharmacy

All covered drugs³ \$0 copay
(Some covered drugs are limited to a 30-day supply)

[^]Members living in long-term care facilities pay the same for a 31-day supply as a 30-day supply at a retail pharmacy.

³ You will pay a maximum of \$0 for each 1-month supply of Part D covered insulin drugs.

Additional benefits

Chiropractic services

Medicare-covered chiropractic care (manual manipulation of the spine to correct subluxation)² \$0 copay

Diabetes management

Diabetes monitoring supplies² \$0 copay

At a retail pharmacy, we only cover Accu-Chek[®] and OneTouch[®] brands.

Covered glucose monitors include: OneTouch Verio Flex[®], OneTouch[®] Ultra 2, Accu-Chek[®] Guide Me and Accu-Chek[®] Guide.

Test strips: OneTouch Verio[®], OneTouch Ultra[®], Accu-Chek[®] Guide, Accu-Chek[®] Aviva Plus and Accu-Chek[®] SmartView.

You can get glucose monitors and test strips from a DME provider.

Diabetes self-management training \$0 copay


Therapeutic shoes or inserts² \$0 copay

Durable medical equipment (DME)

DME (e.g., wheelchairs, oxygen)² \$0 copay

Additional benefits

and related supplies Prosthetics (e.g., braces, artificial limbs)² \$0 copay

 <p>Fitness program</p>	<p>\$0 copay Your fitness program helps you stay active and connected at the gym, from home or in your community. It's available to you at no cost and includes:</p> <ul style="list-style-type: none"> <input type="checkbox"/> Free gym membership <input type="checkbox"/> Access to a large national network of gyms and fitness locations <input type="checkbox"/> On-demand workout videos and live streaming fitness classes <input type="checkbox"/> Online memory fitness activities
---	---

Foot care (podiatry services) Foot exams and treatment² \$0 copay

Routine foot care \$0 copay, 6 visits per year

Meal benefit² \$0 copay for home-delivered meals from the network meal provider after an eligible hospital stay. Restrictions apply.

Home health care² \$0 copay

Hospice You pay nothing for hospice care from any Medicare-approved hospice. You may have to pay part of the costs for drugs and respite care. Hospice is covered by Original Medicare, outside of our plan.

Opioid treatment program services² \$0 copay

Outpatient substance use disorder services Outpatient group therapy visit² \$0 copay

Outpatient individual therapy visit² \$0 copay

Additional benefits



Food, over-the-counter (OTC) and utility bill credit

\$227 credit every month to pay for OTC products, healthy food and utility bills

- Choose from thousands of OTC products, like first aid, pain relievers and more
- Buy healthy foods like fruits and vegetables, meat, seafood, dairy products and water
- Pay home utility bills like electricity, heat, water and internet
- Shop at thousands of participating stores, including Walmart, Walgreens, Dollar General and Kroger, or at neighborhood stores near you

Renal dialysis²

\$0 copay

Respite care²

\$0 copay for each session with a network respite care provider, up to 12 sessions every year. This benefit is for members diagnosed with dementia. Restrictions apply.

² May require your provider to get prior authorization from the plan for in-network benefits.

*Benefits are combined in and out-of-network

Member discounts



As a Peoples Health Medicare Advantage plan member, you'll have access to an exclusive collection of discounts on hundreds of products and services. Once you're a member, you can sign in to your member site for a list of discounts available to you.

Medicaid Benefits

Information for people with Medicare and Medicaid. Your services are paid first by Medicare and then by Medicaid.

The benefits described below are covered by Medicaid. You can see what Louisiana Department of Health covers and what our plan covers.

Coverage of the benefits depends on your level of Medicaid eligibility. If Medicare doesn't cover a service or a benefit has run out, Medicaid may help, but you may have to pay a cost share. In some situations, Medicaid may pay your Medicare cost sharing amount. See your Medicaid Member Handbook for more details. If you have questions about your Medicaid eligibility and what benefits you are entitled to, call Louisiana Department of Health, 1-225-342-9500.

Benefits	Medicaid	Peoples Health Secure Complete (HMO-POS D-SNP)
Inpatient Hospital Care	Covered	Covered
Doctor Office Visits	Covered	Covered
Preventive Care	Covered	Covered
Emergency Care	Covered	Covered
Urgently Needed Services	Covered	Covered
Diagnostic Tests Lab and Radiology Services and X-Rays	Covered	Covered
Hearing Services	Covered	Covered
Dental Services	Not Covered	Covered
Vision Services	Not Covered	Covered
Inpatient Mental Health Care	Covered	Covered
Mental Health Care	Covered	Covered
Skilled Nursing Facility (SNF)	Not Covered	Covered
Ambulance	Covered	Covered
Transportation (Routine)	Covered	Covered
Prescription Drug Benefits	Covered	Covered
Chiropractic Care	Not Covered	Covered with limitations
Diabetes Supplies and Services	Covered	Covered
Durable Medical Equipment	Covered	Covered
Foot Care	Covered	Covered
Home Health Care	Covered	Covered
Hospice	Covered	Covered

Benefits	Medicaid	Peoples Health Secure Complete (HMO-POS D-SNP)
Outpatient Hospital Services	Covered	Covered
Renal Dialysis	Covered	Covered
Prosthetic Devices	Covered	Covered

About this plan

Peoples Health Secure Complete (HMO-POS D-SNP) is a Medicare Advantage HMOPOS plan with a Medicare contract.

To join this plan, you must be entitled to Medicare Part A, be enrolled in Medicare Part B, live within our service area listed below, and be a United States citizen or lawfully present in the United States.

This plan is a Dual Eligible Special Needs Plan (D-SNP) for people who have both Medicare and Medicaid, and don't pay anything for covered medical services. How much Medicaid covers depends on your income, resources, and other factors. Some people get full Medicaid benefits.

Your eligibility to enroll in this plan depends on your type of Medicaid.

You can enroll in this plan if you are in one of these Medicaid categories:

- **Qualified Medicare Beneficiary Plus (QMB+):** You get Medicaid coverage of Medicare cost-share and are also eligible for full Medicaid benefits. Medicaid pays your Part A and Part B premiums, deductibles, coinsurance, and copayment amounts for Medicare covered services. You pay nothing, except for Part D prescription drug copays (if applicable).
- **Qualified Medicare Beneficiary (QMB):** You get Medicaid coverage of Medicare cost-share but are not eligible for full Medicaid benefits. Medicaid pays your Part A and Part B premiums, deductibles, coinsurance, and copayment amounts only for Medicare covered services. You pay nothing, except for Part D prescription drug copays (if applicable).
- **Specified Low-Income Medicare Beneficiary (SLMB+):** Medicaid pays your Part B premium and provides full Medicaid benefits. You are eligible for full Medicaid benefits. At times you may also be eligible for limited assistance from your state Medicaid agency in paying your Medicare cost share amounts. Generally your cost share is 0% when the service is covered by both Medicare and Medicaid. There may be cases where you have to pay cost sharing when a service or benefit is not covered by Medicaid.
- **Full Benefits Dual Eligible (FBDE):** Medicaid may provide limited assistance with Medicare cost-sharing. Medicaid also provides full Medicaid benefits. You are eligible for full Medicaid benefits. At times you may also be eligible for limited assistance from the State Medicaid Office in paying your Medicare cost share amounts. Generally your cost share is 0% when the service is covered by both Medicare and Medicaid. There may be cases where you have to pay cost sharing when a service or benefit is not covered by Medicaid.

If your category of Medicaid eligibility changes, your cost share may also increase or decrease. You must recertify your Medicaid enrollment to continue to receive your Medicare coverage.

Our service area includes these parishes in:

Louisiana: Acadia, Allen, Ascension, Assumption, Avoyelles, Beauregard, Bienville, Bossier, Caddo, Calcasieu, Caldwell, Cameron, Catahoula, Claiborne, Concordia, De Soto, East Baton Rouge, East Carroll, East Feliciana, Evangeline, Franklin, Grant, Iberia, Iberville, Jackson, Jefferson, Jefferson Davis, Lafayette, Lafourche, LaSalle, Lincoln, Livingston, Madison, Morehouse, Natchitoches, Orleans, Ouachita, Plaquemines, Pointe Coupee, Rapides, Red River, Richland, Sabine, St. Bernard, St. Charles, St. Helena, St. James, St. John the Baptist, St. Landry, St. Martin, St. Mary, St. Tammany, Tangipahoa, Tensas, Terrebonne, Union, Vermilion, Vernon, Washington, Webster, West Baton Rouge, West Carroll, West Feliciana, Winn.

Use network providers and pharmacies

Peoples Health Secure Complete (HMO-POS D-SNP) has a network of doctors, hospitals, pharmacies and other providers. For routine dental services, you can use providers that are not in our network. If you use pharmacies that are not in our network, the plan may not pay for those drugs, or you may pay more than you pay at a network pharmacy.

You can go to **peopleshealth.com** to search for a network provider or pharmacy using the online directories. You can also view the plan Drug List (Formulary) to see what drugs are covered and if there are any restrictions.

Required Information

Peoples Health Secure Complete (HMO-POS D-SNP) is insured through UnitedHealthcare Insurance Company or one of its affiliated companies, a Medicare Advantage organization with a Medicare contract and a contract with the State Medicaid Program. Enrollment in the plan depends on the plan's contract renewal with Medicare.

Plans may offer supplemental benefits in addition to Part C benefits and Part D benefits.

If you want to know more about the coverage and costs of Original Medicare, look in your current "Medicare & You" handbook. View it online at www.medicare.gov or get a copy by calling 1-800-MEDICARE (1-800-633-4227), 24 hours a day, 7 days a week. TTY users should call 1-877-486-2048.

UnitedHealthcare does not discriminate on the basis of race, color, national origin, sex, age, or disability in health programs and activities.

UnitedHealthcare provides free services to help you communicate with us such as documents in other languages, Braille, large print, audio, or you can ask for an interpreter. Please contact our Customer Service number at 1-877-367-1803 for additional information (TTY users should call 711). Hours are 8 a.m.-8 p.m.: 7 Days Oct-Mar; M-F Apr-Sept.

UnitedHealthcare ofrece servicios gratuitos para ayudarle a que se comunique con nosotros. Por ejemplo, documentos en otros idiomas, braille, letra grande, audio o bien, usted puede pedir un intérprete. Comuníquese con nuestro número de Servicio al Cliente al 1-877-367-1803, para obtener información adicional (los usuarios de TTY deben comunicarse al 711). Los horarios de atención son de 8 a.m. a 8 p.m.: los 7 días de la semana, de octubre a marzo; de lunes a viernes, de abril a septiembre.

Benefits, features, and/or devices vary by plan/area. Limitations, exclusions and/or network restrictions may apply.

Hearing aids

Other hearing exam providers are available in the UnitedHealthcare network. The plan only covers hearing aids from a UnitedHealthcare Hearing network provider. Provider network size may vary by local market. OTC hearing aid warranties, if available, will vary by device and are handled through the manufacturer. One-time professional fee may apply for prescription hearing aids.

Routine dental benefits

If your plan offers out-of-network dental coverage and you see an out-of-network dentist, you might be billed more. Provider network may vary in local market. Dental network size based on Zelis Network360, May 2023.

Routine eyewear

Additional charges may apply for out-of-network items and services. Provider and retail network may vary in local market. Vision network size based on Zelis Network360, March 2023. Annual routine eye exam and \$100-450 allowance for contacts or designer frames, with standard (single, bi-focal, tri-focal or standard progressive) lenses covered in full either annually or every two years. Savings based on comparison to retail. Other vision providers are available in our network.

Fitness program

Participation in the fitness program is voluntary. Consult your doctor prior to beginning an exercise program or making changes to your lifestyle or health care routine. The fitness program includes standard fitness membership and other offerings. Fitness membership equipment, classes, activities and events may vary by location. Certain services, discounts, classes, activities, events and online fitness offerings are provided by affiliates of UnitedHealthcare Insurance Company or other third parties not affiliated with UnitedHealthcare. Participation in these third-party services is subject to your acceptance of their respective terms and policies. UnitedHealthcare is not responsible for the services or information provided by third parties. The information provided through these services is for informational purposes only and is not a substitute for the advice of a doctor.

Gym network may vary in local market and plan.

AARP® Staying Sharp® is the registered trademark of AARP. Staying Sharp, including all content and features, is offered for informational purposes and to educate users on brain health care and medical issues that may affect their daily lives. Staying Sharp is based on a holistic, lifestyle approach to brain health that encourages users to incorporate into their daily lives activities that are associated with general wellness. Nothing in the service should be considered, or used as a substitute for, medical advice, diagnosis, or treatment. Features including the Cognitive Assessment and Lifestyle Check-Ins, Additional Tests, exercises, and challenges assess performance at a particular moment in time on certain discrete cognitive tasks. Staying Sharp games are intended for entertainment and recreational purposes only. Various factors may affect performance, including sleep, tiredness, focus, and other social, environmental, or emotional factors. Performance is not indicative of cognitive health and not predictive of future performance or medical conditions.

Food, over-the-counter (OTC) and utility bill credit

Food, OTC and utility benefits have expiration timeframes. Call your plan or review your Evidence of Coverage (EOC) for more information.

Eligibility for healthy food, utilities and \$0 copay for Rx benefits under the Value-Based Insurance Design model is limited to members with Extra Help from Medicare, and will be verified after enrollment.

The Formulary, pharmacy network, and/or provider network may change at any time. You will receive notice when necessary.

Optum® Home Delivery Pharmacy and Optum Rx are affiliates of UnitedHealthcare Insurance Company. You are not required to use Optum Home Delivery Pharmacy for medications you take regularly. If you have not used Optum Home Delivery Pharmacy, you must approve the first prescription order sent directly from your doctor to the pharmacy before it can be filled. Prescriptions from the pharmacy should arrive within 5 business days after we receive the complete order. There may be other pharmacies in our network.

Additional authorizations may be required to access discount programs. The discounts described are neither offered nor guaranteed under our contract with the Medicare program. In addition, they are not subject to the Medicare appeals process. Any disputes regarding these products and services may be subject to the UnitedHealthcare grievance process. Discount offerings may vary by plan and are not available on all plans. The discount offers are made available to members through a third party. Participation in these third-party services are subject to your acceptance of their respective terms and policies. UnitedHealthcare and its respective subsidiaries are not responsible for the services or information provided by third parties.

Helpful resources

You may qualify for Extra Help from Medicare

Extra Help is a program for people with limited incomes and resources who need help paying Part D premiums, deductibles and copays. To see if you qualify for Extra Help, call:

- The Social Security Administration at **1-800-772-1213**, TTY **1-800-325-0778** or visit **ssa.gov**
- Your state Medicaid office or visit **medicaid.gov**

Resources for Caregivers

We offer resources and support for our members and the people who care for them. Ask about our caregiving resources the next time you call or visit **uhc.com/caregiving**.

We're here to help

There's much more to good health than what happens in the doctor's office. Other factors — such as access to food, housing, transportation and financial stability — are just as important. We may be able to help connect you to discounts and services that make your life easier — all at no cost to you. These services may help you:



Save on utility bills, prescription drug expenses and even home repair costs



Find low-cost, easy-to-use transportation



Determine Medicaid eligibility, depending on your income



Find local support groups



Learn about Veterans' Services and support



For assistance, please call **1-866-427-1873**, TTY **711**, 8 a.m.–8 p.m. local time, Monday–Saturday to learn more about programs and eligibility.

Medicare Made Clear®

Medicare Made Clear is an educational program from UnitedHealthcare designed to help you learn all you need to know about Medicare so you can make informed decisions about your health and Medicare coverage.



MedicareMadeClear.com

Before you enroll

Make sure this plan is the right one for you. It's important that you understand how the plan works and what benefits are covered before you enroll in this plan. You can find plan documents at [peopleshealth.com](https://www.peopleshealth.com).



Did you check the online Drug List (Formulary) to make sure your prescription drugs are covered?

Drugs not covered by the plan may have alternative drugs that can be used instead.



Did you check the online Provider Directory to make sure your providers are in the network?

If your providers are not in the network, you will need to select a new network provider. You also have access to a large dental provider network. You can get care from out-of-network dental providers but your costs may be higher, even for services with a \$0 copay.



Did you review the online Pharmacy Directory to make sure the pharmacy you use is in the network?

If your pharmacy is not in the network, you will need to select a new network pharmacy.



Did you look through the Summary of Benefits in this booklet to review your medical services and prescription drugs?

You can find a complete list of coverage, benefits and plan rules in the Evidence of Coverage online.



You're eligible to enroll in this Dual Special Needs Plan (D-SNP) if you:



Are enrolled in Original Medicare Parts A and B



Receive state Medicaid benefits



Live in the plan's service area

How to enroll

When you're ready to enroll, you have a few options to choose from. First, you'll need your Medicare card handy, no matter which option you choose.



Online

Visit peopleshealth.com or scan the code below to enroll online.

If you need any help while enrolling online, select the **Chat now** button to connect with one of our Licensed Sales Representatives.



By phone

Call one of our Licensed Sales Representatives toll-free at **1-855-269-0778**, TTY **711**, 8 a.m.-8 p.m. local time, 7 days a week to enroll over the phone or to schedule an appointment with an agent in your area.

If you already have an agent, they can review this plan with you to make sure it meets your needs before helping you enroll.



Enroll online or by phone for the easiest experience. Or, you can complete the enrollment request form and send it to us. If there isn't an enrollment form in this book, call the number above to request one.

Scan this code to
complete your
enrollment online



What to expect after you enroll

Once you're a member, you'll find support for what matters, big and small. You can easily manage and find answers about your plan on the UnitedHealthcare app or your member site. And our UnitedHealthcare UCard® makes it easier than ever to unlock more from your Medicare Advantage plan.



You are here
Enrollment
submitted



Download the app
or create your
account online



UCard arrives in
the mail – be sure
to activate it



Coverage begins!
Start using
your plan

Manage your plan online

If you haven't done so already, use your Medicare ID or member ID number and email address to create an account on the app or at **MyPeoplesHealthPlan.com**. Online you can:

- Find network providers and pharmacies and view plan documents, like your Drug List (Formulary)
- Complete your health assessment

Once your coverage begins

- Schedule your annual physical and wellness visit
- Get a 3-month supply of your prescriptions using a home delivery pharmacy service
- Review UnitedHealthcare UCard credit balances

Thank you for choosing us

If you have questions, call the number on your UnitedHealthcare UCard.

Scan this code to
download the
UnitedHealthcare app



This page left intentionally blank.

Scope of Appointment Confirmation Form

Before meeting with a Medicare beneficiary (or their authorized representative), Medicare requires that Sales Agents use this form to ensure your appointment focuses only on the type of plan and products you are interested in. A separate form should be used for each Medicare beneficiary.

Please check what you want to discuss with the Sales Agent (See the back of this page for definitions):

- Medicare Advantage (Part C) plans and cost plans
- Standalone Medicare prescription drug (Part D) plans
- Medicare Supplement (Medigap) products
- Dental, vision, hearing products
- Hospital indemnity products

By signing this form, you agree to meet with a Sales Agent to discuss the products checked above. The Sales Agent is either employed or contracted by a Medicare plan and may be paid based on your enrollment in a plan. They do not work directly for the federal government.

Signing this form does not affect your current or future enrollment in a Medicare plan, enroll you in a Medicare plan or obligate you to enroll in a Medicare plan. All information provided on this form is confidential.

Beneficiary or authorized representative signature and signature date:

Signature of beneficiary/authorized representative	Today's date
	MM - DD - YYYY

If you are the authorized representative, please sign above and print clearly and legibly below:

Name (First and Last)	Relationship to beneficiary
-----------------------	-----------------------------

To be completed by licensed sales representative (please print clearly and legibly)

Sales Agent name (First and Last)	Sales Agent phone ■ ■ ■ - ■ ■ ■ - ■ ■ ■ ■	Sales Agent ID
-----------------------------------	--	----------------

Beneficiary name (First and Last)	Beneficiary phone ■ ■ ■ - ■ ■ ■ - ■ ■ ■ ■	Date of appointment MM - DD - YYYY
-----------------------------------	--	--

Beneficiary address

Initial method of contact	Plan(s) the Sales Agent will represent during the meeting
---------------------------	---

Sales Agent signature

Medicare Advantage plans (Part C) and cost plans

Medicare Health Maintenance Organization (HMO) plan — A Medicare Advantage plan that provides all Original Medicare Part A and Part B health coverage and sometimes covers Part D prescription drug coverage. In most HMOs, you can only get your care from doctors or hospitals in the plan's network (except in emergencies).

Medicare HMO point-of-service (HMO-POS) plan — A Medicare Advantage plan that provides all Original Medicare Part A and Part B health coverage and sometimes covers Part D prescription drug coverage. HMO-POS plans may allow you to get some services out of network for a higher copay or coinsurance.

Medicare preferred provider organization (PPO) plan — A Medicare Advantage plan that provides all Original Medicare Part A and Part B health coverage and sometimes covers Part D prescription drug coverage. PPOs have network doctors, providers and hospitals but you can also use out-of-network providers, usually at a higher cost.

Medicare private fee-for-service (PFFS) plan — A Medicare Advantage plan in which you may go to any Medicare-approved doctor, hospital and provider that accepts the plan's payment, terms and conditions and agrees to treat you — not all providers will. If you join a PFFS plan that has a network, you can see any of the network providers who have agreed to always treat plan members. You will usually pay more to see out-of-network providers.

Medicare Special Needs Plan (SNP) — A Medicare Advantage plan that has a benefit package designed for people with special health care needs. Examples of the specific groups served include people who have both Medicare and Medicaid, people who reside in nursing homes and people who have certain chronic medical conditions.

Medicare Medical Savings Account (MSA) plan — MSA plans combine a high-deductible health plan with a bank account. The plan deposits money from Medicare into the account. You can use it to pay your medical expenses until your deductible is met.

Medicare cost plan — In a Medicare cost plan, you can go to providers both in and out-of-network. If you get services outside of the plan's network, your Medicare-covered services will be paid for under Original Medicare but you will be responsible for Medicare coinsurance and deductibles.

Stand-alone Medicare prescription drug (Part D) plan

Medicare prescription drug plan (PDP) — A standalone drug plan that adds prescription drug coverage to Original Medicare, some Medicare Cost Plans, some Medicare private fee-for-service plans and Medicare Medical Savings Account Plans.

Other related products

Medicare Supplement (Medigap) Products — Insurance plans that help pay some of the out-of-pocket costs not paid by Original Medicare Part A and Part B, such as deductibles and coinsurance amounts for Medicare approved services.

Dental, vision, hearing products — Plans offering additional benefits for consumers who are looking to cover needs for dental, vision or hearing. These plans are not affiliated or connected to Medicare.

Hospital indemnity products — Plans offering additional benefits; payable to consumers based upon their medical utilization; sometimes used to defray copays/coinsurance. These plans are not affiliated or connected to Medicare.



A UnitedHealthcare Company

2025 Enrollment Request Form

Peoples Health Secure Complete (HMO-POS D-SNP) H1961-019-000

Information about you (Please type or print in black or blue ink)

Last name	First name	Middle initial
-----------	------------	----------------

Birth date	Sex <input type="checkbox"/> Male <input type="checkbox"/> Female
------------	---

Home phone number () –	Mobile phone number () –
-----------------------------------	-------------------------------------

I give consent for UnitedHealthcare and its affiliates to call the phone number(s) I have provided using an autodialer and/or prerecorded voice technology.

Medicare number

Permanent residence street address (**Don't enter a P.O. box. Note: For individuals experiencing homelessness, a PO Box may be considered your permanent residence address**)

City	Parish	State	Zip code
------	--------	-------	----------

Mailing address (**Only if it's different from above. You can give a P.O. box.**)

City	State	Zip code
------	-------	----------

Email address (optional)

Enrollee name _____

Agent name/ID number _____

Do you have other insurance that will cover your prescription drugs? Yes No

(Examples: Other private insurance, TRICARE, federal employee coverage, VA benefits or state programs.)

If **yes**, what is it?

Name of other insurance _____

Member number	Group number	RxBin	RxPCN (optional)
---------------	--------------	-------	------------------

Answering these questions is your choice. You can't be denied coverage because you don't fill them out.

How do you want to pay?

If you have a monthly plan premium (including any late enrollment penalty you may owe), you can pay your premium by automatic deduction from your Social Security or Railroad Retirement Board (RRB) benefit check each month. You can also pay from a bank account through Electronic Funds Transfer (EFT).

If you don't choose an option below, we'll send a bill each month to your mailing address.

If you must pay a Part D-Income Related Monthly Adjustment Amount (Part D-IRMAA),

Social Security (SS) will send you a letter and ask you how you want to pay it:

- You can pay it from your SS check
- Medicare can bill you
- The Railroad Retirement Board (RRB) can bill you
- I want to pay from my Social Security check
- I want to pay from my Railroad Retirement Board (RRB) check
- I want to pay directly from a bank account

Account type Checking Savings

Account holder name: _____

Bank routing number _/_/_/_/_/_/_/_/_/_

Bank account number _/_/_/_/_/_/_/_/_/_/_

A few questions to help us manage your plan

1. Would you prefer plan information in another language or an accessible format?

If you would prefer plan information in another language or accessible format, please check what you'd like: Spanish Braille Large print Audio CD Data CD

Enrollee name _____

Agent name/ID number _____

If you don't see the language or format you want, please call us toll-free at **1-855-269-0778**, TTY **711**, 8 a.m.-8 p.m. local time, 7 days a week. Or visit **peopleshealth.com** for online help.

2. Are you enrolled in your state Medicaid program?

Yes No

If yes, please give us your Medicaid number: _____

3. Are you Hispanic, Latino/a, or Spanish origin? Select all that apply.

- No, not of Hispanic, Latino/a, or Spanish origin
- Yes, Mexican, Mexican American, or Chicano/a
- Yes, Puerto Rican
- Yes, Cuban
- Yes, another Hispanic, Latino, or Spanish origin
- I choose not to answer**

4. What's your race? Select all that apply.

- American Indian or Alaska Native
- Black or African American

Asian:

- Asian Indian
- Chinese
- Filipino
- Japanese
- Korean
- Vietnamese
- Other Asian

Native Hawaiian or Pacific Islander:

- Guamanian or Chamorro
- Native Hawaiian
- Samoan
- Other Pacific Islander
- White
- I choose not to answer**

Member/Citizen of a federal or state recognized Tribe (name of Tribe) _____

5. What is your gender? Select one.

- Woman
- Man
- Non-binary
- I use a different term: _____
- I choose not to answer**

6. Which of the following best represents how you think of yourself? Select one.

- Lesbian or gay
- Straight, that is, not gay or lesbian
- Bisexual
- I use a different term: _____
- I don't know
- I choose not to answer**

7. Do you or your spouse work?

Yes No

Enrollee name _____

Agent name/ID number _____

Do you or your spouse have other health insurance that will cover medical services?
(Examples: Other employer group coverage, LTD coverage, Workers' Compensation,
auto liability, or Veterans benefits)

Yes No

If yes, please complete the following:

Name of health insurance company

Member number

8. Please give us the name of your primary care provider (PCP), clinic or health center.

You can find a list on the plan website or in the Provider Directory.

Provider or PCP full name

Provider/PCP number

(Please enter the number exactly as it appears on
the website or in the Provider Directory. It will be
10 to 12 digits. Don't include dashes.)

Are you now seeing or have you recently seen this provider? Yes No

Providing your email address above automatically enrolls you in paperless delivery for some of your plan communications.

You will get many of your required plan communications delivered electronically. We will send you an email when new communications (For example: Explanation of Benefits or the Annual Notice of Changes) are available online. You can access these communications through any device such as a computer, tablet or mobile phone.

If you would rather have hard copies of required materials mailed to you, please check here:

Instead of paperless delivery, we will mail you hard copies of required materials. Please note that some communications are very large and may not fit in all mailboxes. You can change your preference for delivery at any time.

Please read and sign

By completing this form, I agree to the following:

- I must keep both Hospital (Part A) and Medical (Part B) to stay in Peoples Health. I must keep paying my Part B premium if I have one, unless Medicaid or someone else pays for it.
- I understand that people with Medicare are generally not covered under Medicare while out of the country, except for limited coverage near the U.S. border. This plan covers emergency and urgent care outside of the U.S. See the Summary of Benefits for more information.
- I understand that when my Peoples Health coverage begins, I must get all of my medical and prescription drug benefits from Peoples Health. Benefits and services authorized by Peoples Health and contained in my Peoples Health "Evidence of Coverage" document (also known as a

Enrollee name _____

Agent name/ID number _____

- member contract or subscriber agreement) will be covered. Neither Medicare nor Peoples Health will pay for benefits or services that are not covered.
- I understand that I can be enrolled in only one Medicare Advantage (MA) plan at a time – and that enrollment in this plan will automatically end my enrollment in another MA plan (exceptions apply for MA Private Fee-for-Service (PFFS), MA Medicare Medical Savings Account (MSA) plans).
 - Release of information:** By joining this Medicare Advantage Plan, I acknowledge that the plan will share my information with Medicare, who may use it to track my enrollment, to make payments, and for other purposes allowed by Federal law that authorize the collection of this information (see Privacy Act Statement below).
 - I give Peoples Health permission to share my protected health information with organizations or person(s) for permissible purposes under applicable law as required to administer my health plan.
 - The information on this form is correct to the best of my knowledge. I understand that if I intentionally provide false information on this form I will be disenrolled from the plan.
 - My response to this form is voluntary. However, failure to respond may affect enrollment in the plan.

When I sign below, it means that I have read and understand the information on this form

If I sign as an authorized representative, it means I have the legal right under state law to sign. I can show written proof (power of attorney, guardianship, etc.) of this right if Medicare asks for it. I understand that I will need to submit written proof of this right, to the plan, if I wish to take action on behalf of the member beyond this application. After this application has been approved and I have received my UnitedHealthcare UCard®, I can call Customer Service at the number on my UnitedHealthcare UCard to update my authorization information on file.

Signature of applicant/member/authorized representative Today's date

If you are the authorized representative, please sign above and complete the information below (*Not a Sales Agent)

Last name	First name	
Address		
City	State	Zip code
Phone number () –	Relationship to applicant	

Enrollee name _____

Agent name/ID number _____

For individuals helping enrollee with completing this form only

Complete this section if you're an individual (i.e. agents, brokers, SHIP counselors, family members, or other third parties) helping an enrollee fill out this form.

Name	Relationship to enrollee
Signature	National Producer Number (Agents/Brokers only)

For Licensed Sales Representative/agency use only

Licensed Sales representative/Writing ID	Initial receipt date
Licensed Sales representative/agent name	Proposed effective date
Employer group name	
Employer group ID	Branch ID

Agent must complete

- | | | | |
|---|--|---|--|
| <input type="checkbox"/> IEP (MA-PD enrollees) | <input type="checkbox"/> ICEP (MA enrollees) | <input type="checkbox"/> IEP (MA-PD enrollees eligible for 2nd IEP) | <input type="checkbox"/> OEP (Jan 1 - Mar 31) |
| <input type="checkbox"/> OEP (Newly eligible) | <input type="checkbox"/> SEP (Dual LIS change of status) | <input type="checkbox"/> SEP (Change in residence) | <input type="checkbox"/> SEP (Loss of EGHP coverage) |
| <input type="checkbox"/> SEP (Chronic) | <input type="checkbox"/> SEP (Dual LIS maintaining) | <input type="checkbox"/> AEP (October 15-December 7) | <input type="checkbox"/> OEPI |
| <input type="checkbox"/> SEP (SEP reason) _____ | | | |

Enrollee name _____

Agent name/ID number _____

Licensed Sales representative signature (optional)

Date

Please fax this completed form to:

Fax: 1-888-950-1170

Fax the front and back of each page

PRIVACY ACT STATEMENT: The Centers for Medicare & Medicaid Services (CMS) collects information from Medicare plans to track beneficiary enrollment in Medicare Advantage (MA) or Prescription Drug Plans (PDP), improve care, and for the payment of Medicare benefits. Sections 1851 and 1860D-1 of the Social Security Act and 42 CFR §§ 422.50, 422.60, 423.30 and 423.32 authorize the collection of this information. CMS may use, disclose and exchange enrollment data from Medicare beneficiaries as specified in the System of Records Notice (SORN) “Medicare Advantage Prescription Drug (MARx)”, System No. 09-70-0588. Your response to this form is voluntary. However, failure to respond may affect enrollment in the plan.

Peoples Health Secure Complete (HMO-POS D-SNP) is insured through UnitedHealthcare Insurance Company or one of its affiliated companies, a Medicare Advantage organization with a Medicare contract and a contract with the State Medicaid Program. Enrollment in the plan depends on the plan's contract renewal with Medicare.

This information is available for free in other languages. Please call our customer service number located on the back cover of this book.

Esta información está disponible sin costo en otros idiomas. Comuníquese con nuestro número de Servicio al Cliente situado en la contraportada de este libro.

OMB No. 0938-1378

Expires: 6/30/2026

Y0066_ERFMA_2025_C

PHLA25HP0221122_000

Enrollment checklist

Before making an enrollment decision, it is important that you fully understand our benefits and rules. If you have any questions, you can call and speak to a Customer Service Representative at the number listed on the back cover of this book.

Understanding the benefits

- ✓ The Evidence of Coverage (EOC) provides a complete list of all coverage and services. It is important to review plan coverage, costs, and benefits before you enroll. Visit our plan website or call to view a copy of the EOC. Our phone number and website are listed on the back cover of this book.
- ✓ Review the Provider Directory (or ask your doctor) to make sure the doctors you see now are in the network. If they are not listed, it means you will likely have to select a new doctor.
- ✓ Review the Pharmacy Directory to make sure the pharmacy you use for any prescription medicines is in the network. If the pharmacy is not listed, you will likely have to select a new pharmacy for your prescriptions.
- ✓ Review the Formulary to make sure your drugs are covered.

Understanding important rules

- ✓ You must continue to pay your Medicare Part B premium unless your Part B premium is paid for you by Medicaid or another third party. This premium is normally taken out of your Social Security check each month.
- ✓ Benefits may change on January 1 of each year.
- ✓ Our plan allows you to see providers outside of our network (non-contracted providers). Check the EOC to see which out-of-network services are covered on this plan. However, while we will pay for covered services the provider must agree to treat you. Except in an emergency or urgent situation, non-contracted providers may deny care.
- ✓ Effect on Current Coverage. If you are currently enrolled in a Medicare Advantage plan, your current Medicare Advantage health care coverage will end once your new Medicare Advantage coverage starts. If you have TRICARE, your coverage may be affected once your new Medicare Advantage coverage starts. Please contact TRICARE for more information. If you have a Medigap plan, once your Medicare Advantage coverage starts, you may want to drop your Medigap policy because you will be paying for coverage you cannot use.
- ✓ This plan is a Dual Eligible Special Needs Plan (D-SNP). Your ability to enroll will be based on verification that you are entitled to both Medicare and medical assistance from a state plan under Medicaid.

2025 Enrollment receipt

To be completed if enrolling with a Licensed Sales Representative.

Please use this as your temporary proof of coverage until Medicare has confirmed your enrollment and you receive your UnitedHealthcare UCard®. This receipt is not a guarantee of enrollment.

This copy is for your records only. Please do not resubmit enrollment.

Applicant 1:		Applicant 2 (if applicable):	
Name		Name	
Application date	- -	Application date	- -
Proposed effective date	- -	Proposed effective date	- -
Plan name		Plan name	
Plan type		Plan type	
Health plan/PBP number		Health plan/PBP number	
Enrollment tracking number (if applicable)		Enrollment tracking number (if applicable)	

Call your Licensed Sales Representative if you have any questions:

Representative name and ID number

Representative phone number

RxBIN: 610097

Rx PCN: 9999

RxGRP: COS

We're here to help. If you have additional questions, please call Customer Service toll-free at **1-855-269-0778**, TTY **711**, 8 a.m.-8 p.m. local time, 7 days a week.

Important reminder - You don't need a Medigap or Medicare Supplement insurance plan with a Medicare Advantage plan. If you currently have a Medigap plan, contact the insurer to cancel your plan once your Medicare Advantage plan begins.



A UnitedHealthcare Company

Important information: 2025 Medicare star ratings



Peoples Health - H1961

For 2025, Peoples Health - H1961 received the following Star Ratings from Medicare:

Overall Star Rating: ★ ★ ★ ★ 4 stars

Health Services Rating: ★ ★ ★ ★ 4 stars

Drug Services Rating: ★ ★ ★ ↯ 3.5 stars

Every year, Medicare evaluates plans based on a 5-star rating system.

Why Star Ratings are Important

Medicare rates plans on their health and drug services. This lets you easily compare plans based on quality and performance.

Star Ratings are based on factors that include:

- Feedback from members about the plan's service and care
- The number of members who left or stayed with the plan
- The number of complaints Medicare got about the plan
- Data from doctors and hospitals that work with the plan

More stars mean a better plan – for example, members may get better care and better, faster customer service.

The number of stars shows how well a plan performs.

- ★ ★ ★ ★ ★ EXCELLENT
- ★ ★ ★ ★ ABOVE AVERAGE
- ★ ★ ★ AVERAGE
- ★ ★ BELOW AVERAGE
- ★ POOR

Get More Information on Star Ratings Online

Compare Star ratings for this and other plans online at [medicare.gov/plan-compare](https://www.medicare.gov/plan-compare).

Questions about this plan?

Contact Peoples Health 7 days a week from 8:00 a.m. to 8:00 p.m. Local time at **888-834-3721** (toll-free) or **711** (TTY), from October 1 to March 31. Our hours of operation from April 1 to September 30 are Monday through Friday from 8:00 a.m. to 8:00 p.m. Local time. Current members please call **877-367-1803** (toll-free) or **711** (TTY).

Nondiscrimination notice

Discrimination is against the law. The company complies with applicable federal civil rights laws and does not discriminate, exclude people, or treat them differently based on race, color, national origin, age, disability, or sex, including sex characteristics, including intersex traits; pregnancy or related conditions; sexual orientation; gender identity, and sex stereotypes.

If you believe you were treated unfairly because of your race, color, national origin, age, disability, or sex, you can send a grievance to our Civil Rights Coordinator.

- **Email:** UHC_Civil_Rights@uhc.com
- **Mail:** Civil Rights Coordinator
UnitedHealthcare Civil Rights Grievance
P.O. Box 30608, Salt Lake City, UT 84130

You can also file a civil rights complaint with the U.S. Department of Health and Human Services, Office for Civil Rights.

- **Online:** <https://www.hhs.gov/civil-rights/filing-a-complaint/index.html>
- **Phone:** Toll-free **1-800-368-1019, 800-537-7697** (TDD)
- **Mail:** U.S. Department of Health and Human Services
200 Independence Ave SW, HHH Building, Room 509F
Washington, D.C. 20201

We provide free auxiliary aids and services to people with disabilities to communicate effectively with us, such as:

- Qualified American Sign Language interpreters
- Written information in other formats (large print, audio, accessible electronic formats, other formats)

We also provide free language services to people whose primary language is not English, such as:

- Qualified interpreters
- Information written in other languages

If you need these services, please call the toll-free phone number on your member identification card or listed on the cover of the booklet (TTY **711**), Monday through Friday, 8 a.m. to 8 p.m. ET.

This notice is available at

<https://www.uhc.com/legal/nondiscrimination-and-language-assistance-notice>.

Multi-language Interpreter Services

English: We have free interpreter services to answer any questions you may have about our health or drug plan. To get an interpreter, please call us using the toll-free number on your member identification card or listed on the cover of the booklet. Someone who speaks your language can help you. This is a free service.

Spanish: Contamos con servicios gratuitos de intérprete para responder cualquier pregunta que pudiera tener sobre nuestro plan de salud o de medicamentos. Para obtener los servicios de un intérprete, llámenos al número de teléfono gratuito que figura en su tarjeta de identificación de miembro o en la portada del folleto. Una persona que habla su idioma podrá ayudarle. Es un servicio gratuito.

Chinese Mandarin: 我們提供免費的口譯服務，可回答您可能對我們的健康或藥物計劃的任何問題。如需口譯員，請撥打您的會員識別卡或手冊封面列出的免付費電話號碼聯絡我們。會說您的語言的人可協助您。這是免費服務。

Chinese Cantonese: 我們提供免費的口譯服務，可回答您可能對我們的健康或藥物計劃的任何問題。如需口譯員，請撥打您的會員識別卡或手冊封面列出的免付費電話號碼聯絡我們。會說您的語言的人可協助您。這是免費服務。

Tagalog: Mayroon kaming libreng serbisyo ng interpreter para sagutin anumang tanong na maaaring mayroon ka tungkol sa kalusugan o plano ng gamot. Para makakuha ng interpreter, pakitawagan kami gamit ang libreng numero na nasa iyong kard ng pagkakakilanlan ng kasapi o nakalista sa pabalat ng booklet. Sinumang nagsasalita ng wika mo ay puwedeng makatulong sa iyo. Ang serbisyonang ito ay libre.

French: Nous disposons de services d'interprétation gratuits pour répondre à toutes les questions que vous pourriez vous poser sur notre régime d'assurance maladie ou d'assurance-médicaments. Pour recevoir l'aide d'un interprète, veuillez nous appeler en composant le numéro gratuit figurant sur votre carte d'identification de membre ou sur la première de couverture de la brochure. Quelqu'un parlant votre langue peut vous aider. Ce service est gratuit.

Vietnamese: Chúng tôi có dịch vụ thông dịch viên miễn phí để trả lời các câu hỏi mà bạn có về chương trình bảo hiểm sức khỏe hay thuốc của chúng tôi. Để gặp thông dịch viên, vui lòng gọi cho chúng tôi theo số điện thoại miễn phí trên thẻ nhận dạng hội viên của bạn hoặc ghi trên bìa của quyển sách nhỏ. Người nói cùng ngôn ngữ với bạn có thể giúp bạn. Đây là dịch vụ miễn phí.

German: Wir verfügen über kostenlose Dolmetscherdienste, um alle Fragen zu beantworten, die Sie über unseren Gesundheits- oder Medikamentenplan haben mögen. Um einen Dolmetscher zu erhalten, rufen Sie uns bitte unter der kostenfreien Nummer an, die auf Ihrem Mitgliedsausweis oder auf dem Umschlag der Broschüre aufgeführt ist. Jemand, der Ihre Sprache spricht, kann Ihnen helfen. Dies ist eine kostenlose Dienstleistung.

Korean: 건강 또는 의약품 플랜에 관한 질문에 답변해드리기 위해 무료 통역 서비스를 제공합니다. 통역 서비스를 이용하려면, 가입자 ID 카드 또는 이 소책자 표지에 나와 있는 수신자 부담 전화번호로 전화해 주십시오. 한국어를 사용하는 통역사가 도움을 드릴 수 있습니다. 이 서비스는 무료입니다.

Russian: Если у Вас возникнут какие-либо вопросы о нашем плане медицинского страхования или плане по приобретению препаратов, мы предоставим Вам бесплатные услуги устного перевода. Для того чтобы воспользоваться услугами устного перевода, пожалуйста, свяжитесь с нами по бесплатному номеру телефона, указанному на Вашей идентификационной карте участника плана или спереди на буклете. Сотрудник, который говорит на Вашем языке, сможет Вам помочь. Данная услуга предоставляется бесплатно.

Arabic: لدينا خدمات ترجمة فورية للرد على أي أسئلة قد تكون لديك حول الخطة الصحية أو خطة الأدوية الخاصة بنا. للحصول على مترجم، اتصل بنا باستخدام رقم الهاتف المجاني على بطاقة تعريف عضويتك أو على غلاف الكتيب. سيساعدك شخص ما يتحدث لغتك. هذه خدمة مجانية.

Hindi: हमारे स्वास्थ्य या दवा प्लान के बारे में आपके किसी भी प्रश्न का उत्तर देने के लिए हमारे पास मुफ्त दुभाषिया सेवाएं मौजूद हैं। दुभाषिया पाने के लिए, कृपया अपने सदस्य पहचान पत्र पर या पुस्तिका के अग्रभाग पर सूचीबद्ध टोल-फ्री नंबर का उपयोग करके हमें कॉल करें। आपकी भाषा बोलने वाला कोई व्यक्ति आपकी मदद कर सकता है। यह एक निःशुल्क सेवा है।

Italian: Mettiamo a disposizione un servizio di interpretariato gratuito per rispondere a eventuali domande sul nostro piano sanitario o farmaceutico. Per avvalersi di un interprete, si prega di chiamare il numero verde riportato sulla tessera identificativa o indicato sulla copertina dell'opuscolo. Una persona che parla italiano potrà fornire l'assistenza richiesta. Il servizio è gratuito.

Portuguese: Dispomos de serviços de intérprete gratuitos para esclarecer quaisquer dúvidas que tenha sobre o nosso plano de saúde ou medicação. Para obter um intérprete, contacte-nos através do número gratuito no seu cartão de identificação de membro ou indicado na parte da frente do folheto. Alguém que fala a sua língua pode ajudá-lo(a). Este é um serviço gratuito.

French Creole: Nou gen sèvis entèprèt gratis pou reponn tout kesyon ou gendwa genyen konsènan plan sante oswa medikaman nou an. Pou jwenn yon entèprèt, tanpri rele nou apati nimewo apèl gratis ki sou kat idantifikasyon manm ou an oswa ki endike sou kouvèti ti liv la. Yon moun ki pale lang ou ka ede ou. Sa se yon sèvis gratis.

Polish: Oferujemy bezpłatne usługi tłumaczeniowe, aby odpowiedzieć na wszelkie pytania dotyczące naszego planu ubezpieczenia zdrowotnego lub planu refundacji leków. Aby skorzystać z pomocy tłumacza, proszę zadzwonić pod bezpłatny numer telefonu podany na Pana/Pani karcie identyfikacyjnej lub na okładce broszury. Osoba posługująca się Pana/Pani językiem Panu/Pani pomoże. Usługa ta jest bezpłatna.

Japanese: 当社の医療または処方薬プランに関する質問にお答えするために、無料の通訳サービスをご利用いただけます。通訳が必要な場合には、会員 ID カードまたは本冊子の表紙に記載されているフリーダイヤル番号を使用して、当社までお問い合わせください。お客様の言語を話す通訳者がお手伝いいたします。これは無料のサービスです。

Ready to use your extra benefits?

Peoples Health Secure Complete (HMO-POS D-SNP)

Take advantage of your additional plan benefits by using the providers below.



Call **1-877-367-1803**, TTY **711**, 8 a.m.-8 p.m.: 7 Days Oct-Mar; M-F Apr-Sept or visit **MyPeoplesHealthPlan.com** for:

- Routine vision services: UnitedHealthcare Vision®
- Routine dental benefits: UnitedHealthcare Dental
- Routine transportation
- Fitness program: Renew Active®



Hearing aids

UnitedHealthcare Hearing
1-877-704-3384
UHChearing.com/Medicare



Prescription drug home delivery

Optum® Home Delivery Pharmacy
1-877-889-6358
MyPeoplesHealthPlan.com



Food, over-the-counter (OTC) and utility bill credit

Solutran
1-877-909-1382
mypeopleshealthplan.com



You can count on us to be here when you need us.
Call us when you need 1 on 1 support.

We're happy to help



Download the UnitedHealthcare app



[peopleshealth.com](https://www.peopleshealth.com)



Call toll-free **1-855-269-0778**, TTY **711**
8 a.m.-8 p.m. local time, 7 days a week

Important plan information

Y0066_EGCov_2025_C

Scan this code
to download the
UnitedHealthcare
app



PHLA25PO0215800_001